

## i>clicker 5.4: Conversion Guide

### The software upgrade:

- **Is not required.** Both 5.3 and 5.4 are posted to [www.iclicker.com](http://www.iclicker.com). If you prefer to use the previous version of the software (5.3), we will still support you through 2009!
- **Impacts both Windows and Macintosh.**
- **Is heavily focused on user interface and usability**
- **Won't affect the data in your older MyCourse folders** (though you'll have to take a few steps, outlined below, if you'd like to use the new software with your older data).

### Upgrading to the new software

With i>clicker 5.4, you no longer have to make a separate copy of the MyCoursePC or MyCourseMac folders for each course/section in which you are using i>clicker. **There is a much easier way to set up and use i>clicker for multiple classes.** A single copy of the new iclicker Win or i>clicker Mac folder now gives you access to all your courses and sections.

**Because of the changes to the folder structure, the steps to upgrade your software are a little different from previous versions.**

### OPTION ONE (RECOMMENDED)

- 1 Download **i>clicker 5.4** from the Downloads page at [www.iclicker.com](http://www.iclicker.com).
- 2 Double-click the **i>clicker ZIP file** (the file that you downloaded) to extract the compressed folder. Once the folder is extracted, you may copy the **iclicker Win** or **i>clicker Mac** folder to a Flash drive, hard drive, or network drive.
- 3 From within the **iclicker Win** or **i>clicker Mac** folder, double-click the **i>clicker icon** and follow the steps on the **Welcome screen** to set up individual classes or sections (also outlined below in steps 4-5).

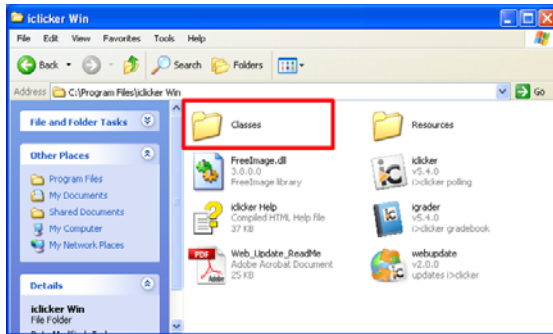


### OPTION TWO:

**To use version 5.4 with older course data, take the following steps:**

- 1 Download **i>clicker 5.4** from the Downloads page at [www.iclicker.com](http://www.iclicker.com).
- 2 Double-click the **i>clicker ZIP file** (the file that you downloaded) to extract the compressed folder. Once the folder is extracted, you may copy the **iclicker Win** or **i>clicker Mac** folder to a Flash drive, hard drive, or network drive.
- 3 Locate the **MyCoursePC** or **MyCourseMac** folders that contain your older course data (You may have changed the name of the folder to match your course title).

- Copy and paste (or drag-and-drop) your **MyCoursePC** or **MyCourseMac** folders into the **Classes** folder within your new **iclicker Win** or **i>clicker Mac** folder. (If you have more than one i>clicker course, copy the folders for each of your courses into the Classes folder.)



- Within the **iclicker Win** or **i>clicker Mac** folder, double-click the **i>clicker icon**. Your older course folders will appear in the new **Welcome screen**. Select your course and click **Choose**.

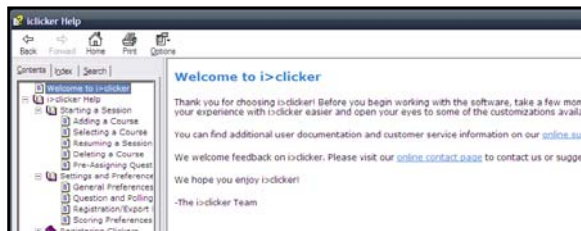
## Additional Software Upgrades

Along with the new class creation tool, we've added the following upgrades to version 5.4:

- We have new icons for i>clicker, i>grader, and WebUpdate.**



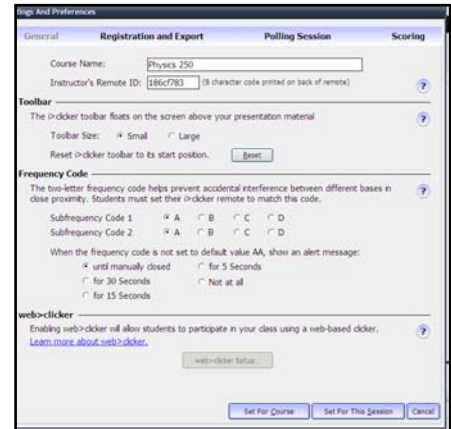
- A new, easily navigable help system is now available.** You can access the help system directly from the main **iclicker Win** or **i>clicker Mac** folder or wherever you see the ? icon. You can also access help by pressing the F1 key on PCs and the Command-? key on Macs.



- The default Register mode for loaning clickers is now **For One Session (Loan)**. To loan a clicker to your students, locate Loan Clickers from the **Main Menu** screen, enter your loaner Remote ID, and then select your student from the roster drop-down menu. Keep the default selection of **For One Session (Loan)** and select **Set and Close**.
- We have revised our Moodle gradebook plug-in** to better meet Moodle standards. This plug-in will enable i>clicker faculty to easily upload their i>clicker polling data into the Moodle gradebook. To obtain the new Moodle plug-in, contact us at [review@iclicker.com](mailto:review@iclicker.com)

- **We've redesigned certain fields in Settings/Preferences screens for greater usability.**

- The Instructor's Remote ID is now the second field under the General tab.
- There is a new web>clicker option that is currently disabled; web>clicker is available for limited, free beta testing at this time. If you are interested in testing web>clicker with your students or for one or two classes, contact us at [review@iclicker.com](mailto:review@iclicker.com).
- The Registration and Export Course Management section has been streamlined and now features more support for new CMS versions.
- The Question Information option has been moved to the top of the Polling Session screen and provides new information about this option.
- The Scoring tab has been refined for greater clarity about point options.



- **We now have i>clicker *integrate* support for Blackboard, Blackboard Enterprise (WebCT) Campus Edition and Vista, and ANGEL.**

*integrate* enables instructors to easily import CMS rosters into their i>clicker course folders and enables student registration within the campus CMS. If you are interested in using *integrate*, please email us at [review@iclicker.com](mailto:review@iclicker.com). We can work closely with the campus CMS administrator and will provide the needed plug-in files and documentation, as well as training and troubleshooting.



- **We now offer support for Blackboard 9.** If your campus has upgraded to Blackboard 9:

- Go to Settings and Preferences > Registration and Export > Course Management System > Select Blackboard Version 8 and above > Select Set for Course.
- Download the Blackboard documentation from [www.iclicker.com](http://www.iclicker.com) (Support > User Guides) and follow the instructions to integrate your i>clicker polling data with your campus Blackboard course management system.

- **We now offer support for ANGEL 7.4 and have also made a number of changes in our support for ANGEL 7.2 and 7.3.** ANGEL made a number of changes to their roster output formats and those changes vary version-by-version. **If you are an ANGEL user, the upgrade to version 5.4 will be crucial to your success in integrate i>clicker and ANGEL data.**

- If you are using any version of ANGEL, go to Settings and Preferences > Registration and Export > Course Management System > Select ANGEL > Set for Course.
- Download the ANGEL documentation from [www.iclicker.com](http://www.iclicker.com) (Support > User Guides) and follow the instructions to integrate your i>clicker polling data with your campus ANGEL course management system.

- **The histogram colors have been redesigned using Color Universal Design,** a design system developed in consideration of people with various types of color vision, to allow information to be accurately conveyed to as many individuals as possible.

- We are in the **beta 2.0 release of web>clicker**, a browser-based virtual polling tool. If you are interested in a free test of web>clicker with your students this fall, contact us at [review@iclicker.com](mailto:review@iclicker.com) to request details.